

# LIVE-STREAM BODY-WORN VIDEO

## COMMANDCENTRAL AWARE FOR STREAMING VIDEO: V300 BODY-WORN VIDEO INTEGRATION

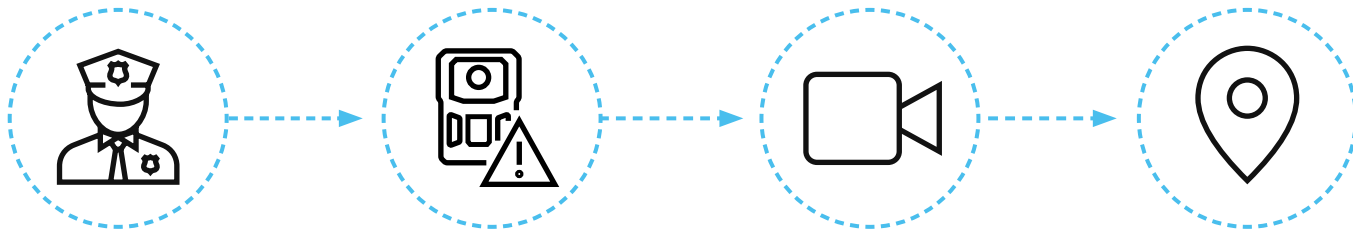
With high risk incidents on the rise, responders need real-time situational awareness to support better decision making and safety on the scene. They need eyes on the scene throughout the incident to improve awareness of an officer's location and offer closer remote visibility and support.

Access real-time body-worn camera video device locations plus live streaming to put eyes on the scene of the incident from anywhere. When connected to the in-car or agency authorized WiFi hotspot, the V300 body-worn camera can now be livestreamed from CommandCentral Aware. This integration offers remote visibility for more precise decision-making, protecting responders and the public.



# SEE IT IN ACTION

In this scenario, see how streaming V300 body-worn video and location into CommandCentral Aware offers additional backup support and supervision in real-time versus reviewing body-worn video feeds post-incident. Knowing what is happening on the scene results in a safer response for all.



## ACTIVATION

An officer responds to a call of a person acting erratically.

The officer arrives on the scene and turns on the 4RE in-car camera which triggers the V300 body camera to record.

The officer gets out of the vehicle and approaches the suspect.

## AWARENESS

The suspect attacks the officer and knocks him unconscious.

As the officer falls down he presses the emergency button on the radio.

## REMOTE VISIBILITY

The dispatcher is prompted with a emergency alert on the CommandCentral Aware Map.

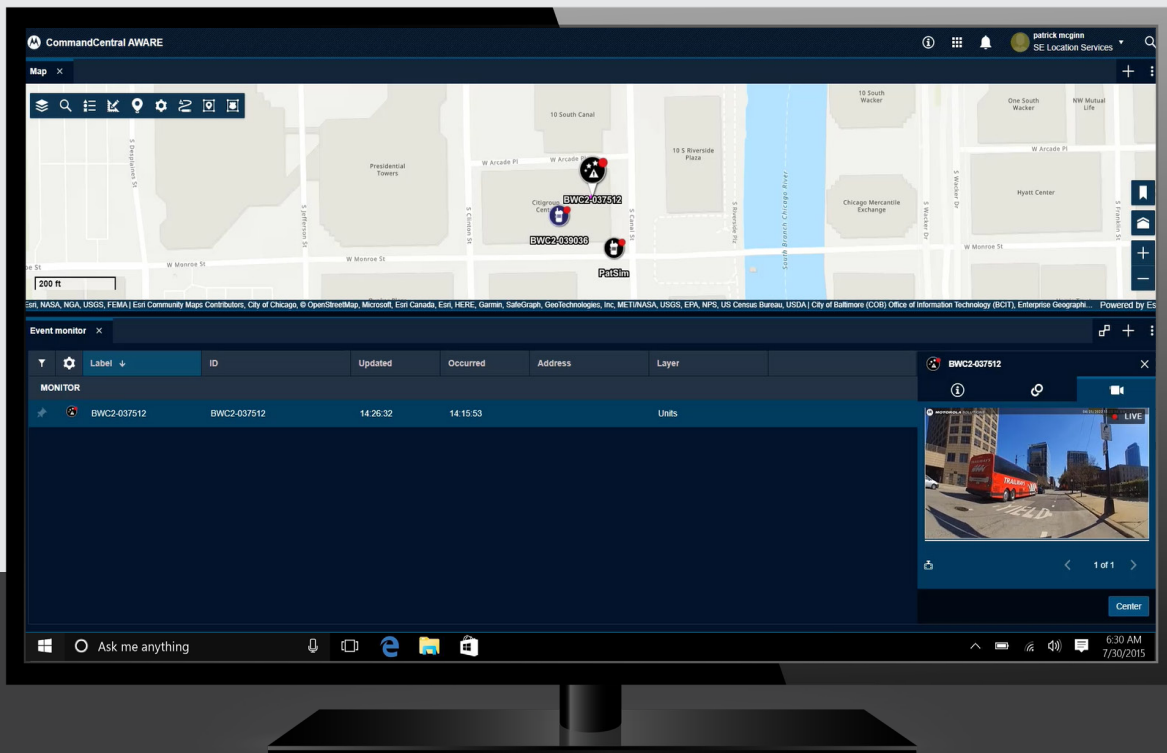
The dispatcher clicks to view the V300 livestream for a better understanding of the incident and sees that the officer is hurt and needs immediate back up.

## REMOTE SUPPORT

The dispatcher identifies the nearest units by location of the officer and calls for backup.

Live streaming details are shared with the responding officers so they are prepared to face the high stress situation.





## KEY BENEFITS

### IMPROVE AWARENESS OF OFFICER'S LOCATION

- View real-time V300 location and video.
- Receive V300 recording activation alerts on the CommandCentral Aware map.
- Enhance the map view and make decisions with added context including custom GIS map layers and traffic, and map controls such as zones of interest, search and measurement tools.

### OFFER CLOSER REMOTE VISIBILITY AND SUPPORT

- View different areas of the scene that the in-car camera is unable to view.
- Gain a complete view of the scene from the agency or command center to inform responders of changes on the scene.
- Provide transparency into the incident response.

### ALIGN WITH AGENCY POLICIES

- For a police officer's privacy the body-worn camera cannot be livestreaming if the V300 is not recording.
- When the V300 is streaming, an "eye" icon shows on the home screen on the body-worn camera letting the officer know that video and audio are streaming.
- The V300 can only display location when the body-worn camera is turned on.



## COMMANDCENTRAL AWARE

Remotely view incidents as they unfold to inform the response on the ground. Bring critical data into a single view with real-time mapping of radios, incidents, alerts, and license plate recognition (LPR) detections alongside streaming in-car and fixed video. Tailor CommandCentral Aware for your agency's needs and maximize your mobile video, radio, fixed video investments.

For more information:

[www.motorolasolutions.com/aware](http://www.motorolasolutions.com/aware)

## V300 BODY-WORN CAMERA

The V300 continuous-operation body-worn camera remains operational beyond a 12-hr shift. Detachable battery. 128GB of storage space. Radio integration. First shift. Second shift. Overtime. No problem. Together, you're unstoppable.

For more information: [www.motorolasolutions.com/V300](http://www.motorolasolutions.com/V300)



For a demonstration or to purchase, contact your sales representative.



Motorola Solutions, Inc. 500 West Monroe Street, Chicago, IL 60661 U.S.A. [motorolasolutions.com](http://motorolasolutions.com)

MOTOROLA, MOTO, MOTOROLA SOLUTIONS and the Stylized M Logo are trademarks or registered trademarks of Motorola Trademark Holdings, LLC and are used under license. All other trademarks are the property of their respective owners. © 2022 Motorola Solutions, Inc. All rights reserved. 07-2022 LC [MW06]